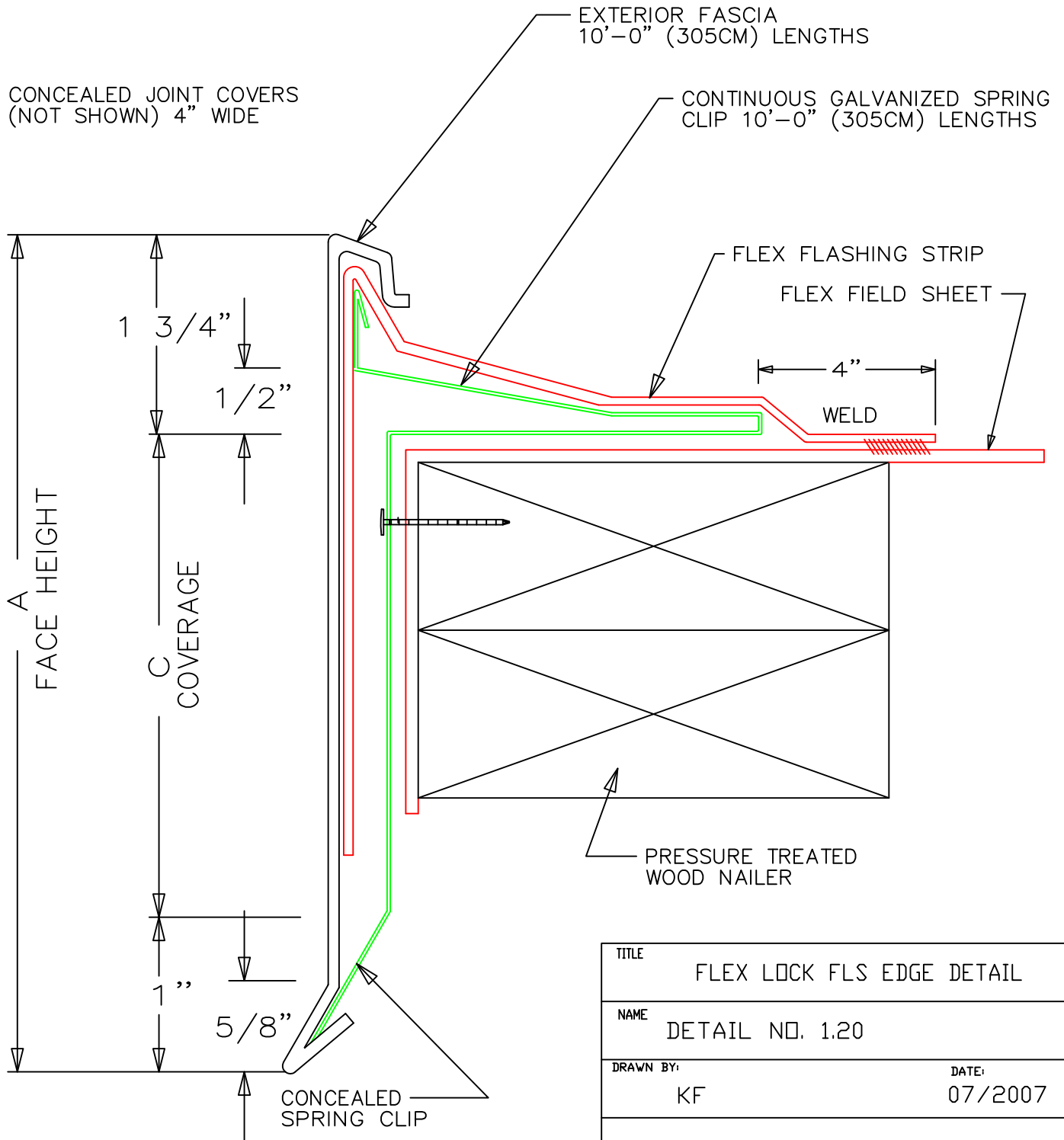


# INSTALLATION

- 1 - INSTALL SPRING CLIP OVER FB FIELD MEMBRANE
- 2 - LAY ROOFING MEMBRANE OVER CLIP AND HOT AIR WELD TO FLEX FIELD SHEET
- 3 - SNAP ON EXTERIOR METAL FASCIA



TITLE	FLEX LOCK FLS EDGE DETAIL	
NAME	DETAIL NO. 1.20	
DRAWN BY:	KF	DATE: 07/2007
APPLICABLE TO ALL FLEX		
MECHANICALLY FASTENED SYSTEMS		
FLEX MEMBRANE INTERNATIONAL	2670 LEISCZ'S BRIDGE RD. LEESPORT, PA 19533 800-969-0108 www.flexmembranes.com	