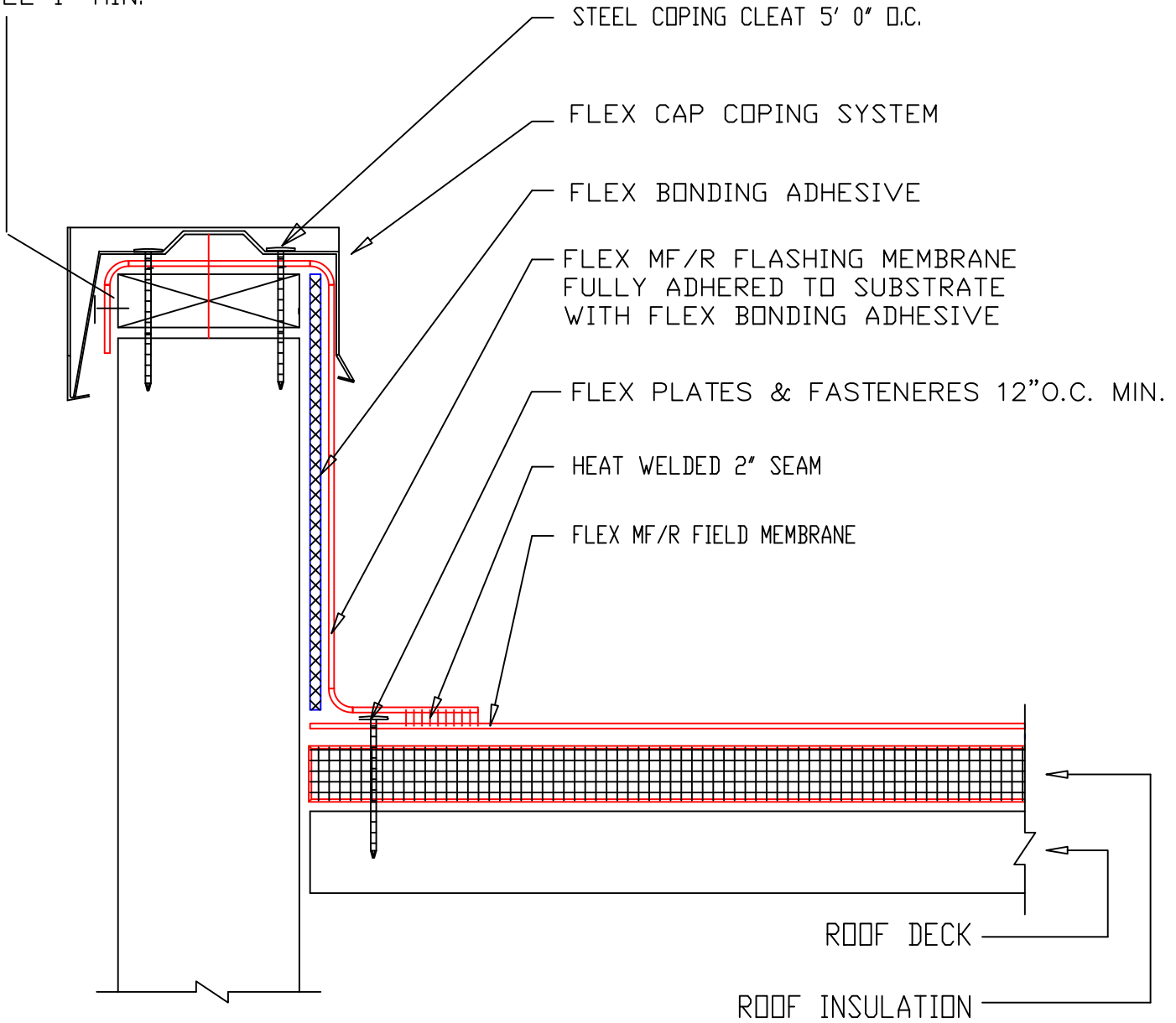


EXTEND FLASHING OVER JOINT BETWEEN BLOCKING AND
WALL 1" MIN.



STEEL COPING CLEAT 5' 0" O.C.

FLEX CAP COPING SYSTEM

FLEX BONDING ADHESIVE

FLEX MF/R FLASHING MEMBRANE
FULLY ADHERED TO SUBSTRATE
WITH FLEX BONDING ADHESIVE

FLEX PLATES & FASTENERS 12" O.C. MIN.

HEAT WELDED 2" SEAM

FLEX MF/R FIELD MEMBRANE

ROOF DECK

ROOF INSULATION

TITLE WALL FLASHING WITH FLEX
CAP COPING

NAME DETAIL NO. 2.30

DRAWN BY:

KF

DATE:

07/2007

APPLICABLE TO ALL FLEX

MECHANICALLY FASTENED SYSTEMS

FLEX
MEMBRANE
INTERNATIONAL

2670 LEISCZ'S BRIDGE RD.
LEESPORT, PA 19533
800-969-0108
www.flexmembranes.com