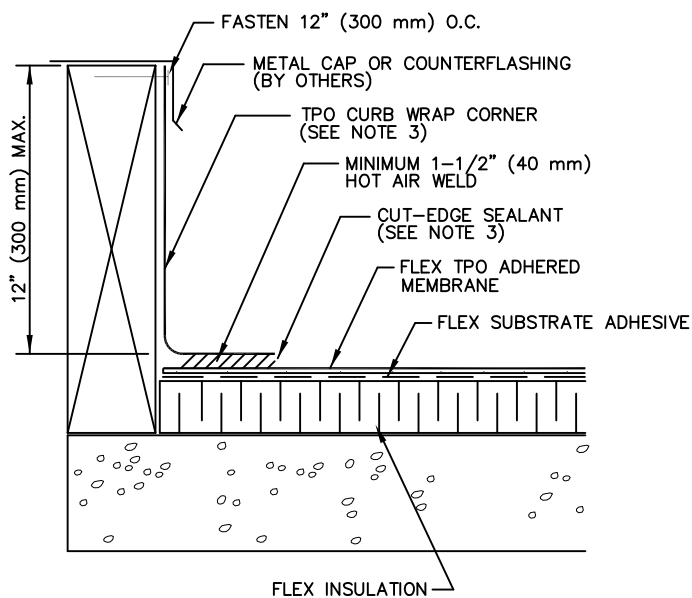
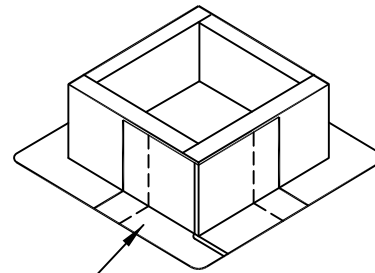


CREASE MEMBRANE AT ANGLE CHANGE TO
LIMIT BRIDGING TO 3/4" (19 mm) MAXIMUM



LIMITED TO 12" (300 mm) MAXIMUM FLASHING HEIGHT



USE ONE TPO CURB WRAP
CORNER AT EACH CORNER OF THE
CURB. HOT AIR WELD ALL SEAMS
IN ACCORDANCE WITH STANDARD
SPlicing METHODS. REFER TO
NOTE 1.

NOTES:

1. FOUR (4) TPO CURB WRAP CORNERS WILL COMPLETELY FLASH A MAXIMUM CURB SIZE OF 6' X 6' (1.8 X 1.8 m). FOR LARGER CURBS USE THE TPO CURB WRAP CORNERS IN CONJUNCTION WITH ADDITIONAL SECTIONS OFF FLEX TPO MEMBRANE.
2. FLASHING MEMBRANE FASTENED APPROXIMATELY 12" ON CENTER. IF FASTENER PENETRATES METAL COUNTERFLASHING, USE NEOPRENE WASHER OR APPLY WATER CUT-OFF MASTIC UNDER COUNTERFLASHING OR CAULK FASTENER HEAD.
3. APPROXIMATELY 1/8" (3 mm) BEAD OF CUT-EDGE SEALANT IS REQUIRED ON THE EDGES OF THE TPO CURB WRAP CORNER.

TPO 3.05

PRE-FORMED CURB FLASHING