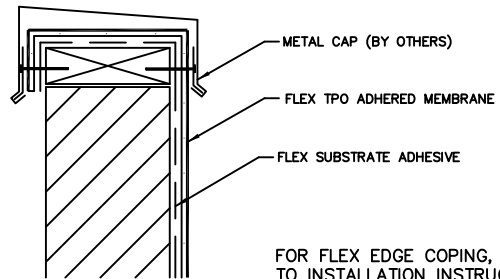


NOTES:

1. WATER CUT-OFF IS TO BE HELD UNDER CONSTANT COMPRESSION.
2. DO NOT WRAP COMPRESSION TERMINATION AROUND CORNERS.
3. ALLOW 1/4" MINIMUM TO 1/2" MAXIMUM (6 TO 13 mm) SPACING BETWEEN CONSECUTIVE LENGTHS OF TERMINATION BAR.

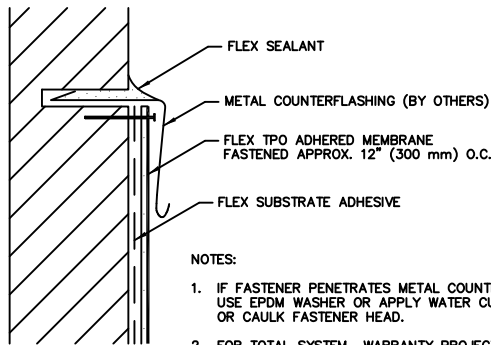
TPO-9A COUNTERFLASHING/TERMINATION BAR



FOR FLEX EDGE COPING, REFER TO INSTALLATION INSTRUCTIONS PUBLISHED SEPARATELY.

TPO-9B

METAL CAP FLASHING

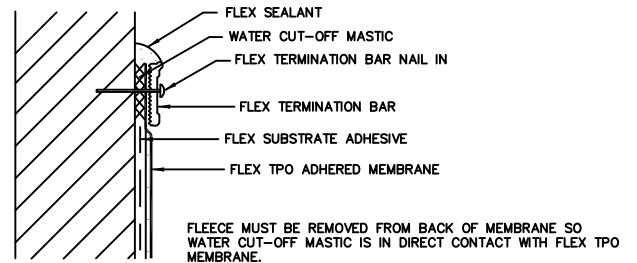


NOTES:

1. IF FASTENER PENETRATES METAL COUNTERFLASHING, USE EPDM WASHER OR APPLY WATER CUT-OFF MASTIC OR CAULK FASTENER HEAD.
2. FOR TOTAL SYSTEM WARRANTY PROJECTS, A FLEX TERMINATION BAR (SEE DETAIL TPO 9A) MUST BE INSTALLED BEHIND THE COUNTERFLASHING.

TPO-9C

COUNTERFLASHING



FLEECE MUST BE REMOVED FROM BACK OF MEMBRANE SO WATER CUT-OFF MASTIC IS IN DIRECT CONTACT WITH FLEX TPO MEMBRANE.

NOTES:

1. APPLY ON HARD SMOOTH SURFACE ONLY; NOT FOR USE ON WOOD.
2. WATER CUT-OFF MASTIC MUST BE HELD UNDER CONSTANT COMPRESSION.
3. DO NOT WRAP COMPRESSION TERMINATION AROUND CORNERS.
4. ALLOW 1/4" (6 mm) MINIMUM TO 1/2" (13 mm) MAXIMUM SPACING BETWEEN CONSECUTIVE LENGTHS OF TERMINATION BAR.

TPO-9D

TERMINATION BAR

TPO 3.08 VERTICAL FLASHING TERMINATION