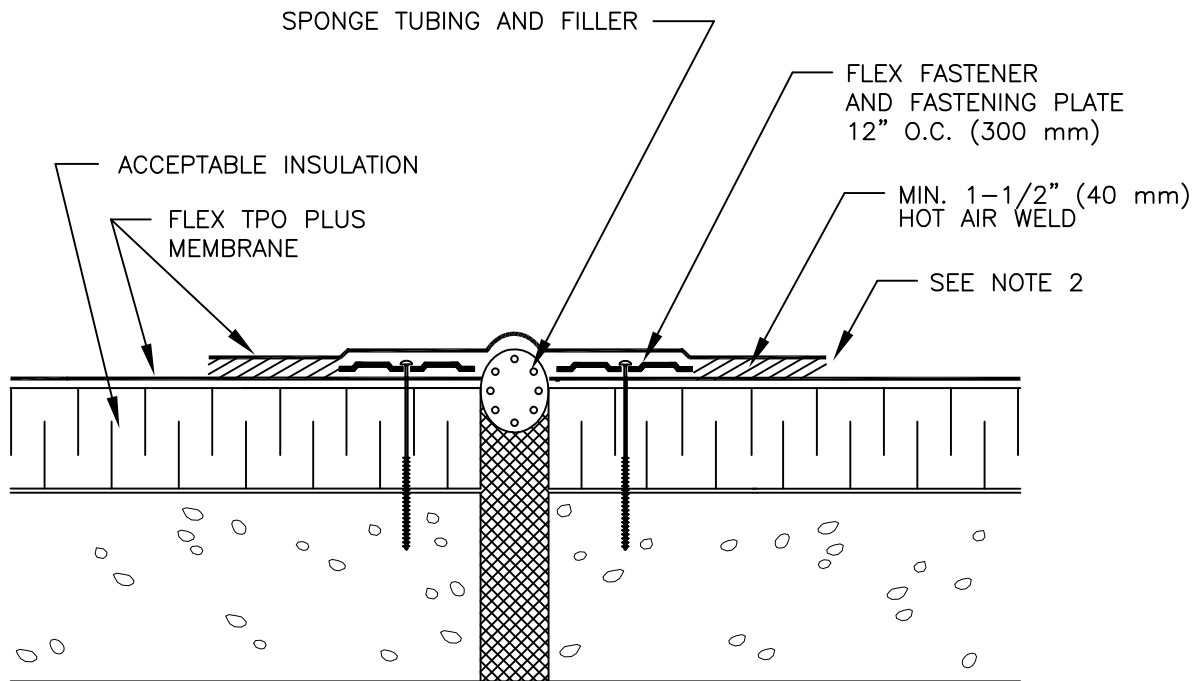
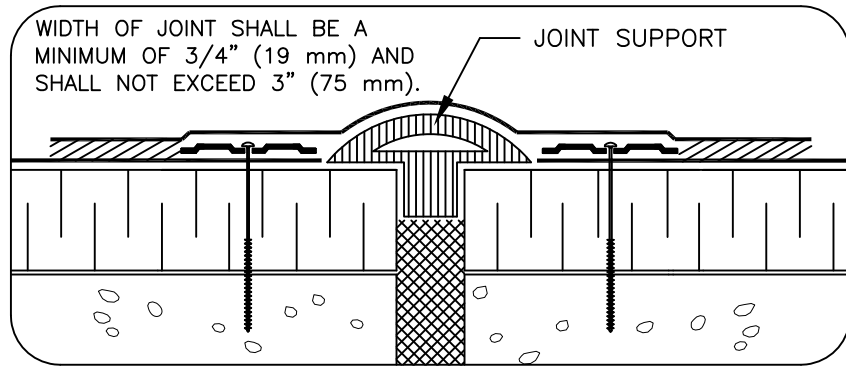


FLEX TPO PLUS MECHANICALLY FASTENED ROOFING SYSTEM



NOTES:

1. POSITION FASTENING PLATES 1/2" (13 mm) MINIMUM TO 1" (25 mm) MAXIMUM FROM EDGE OF DECK MEMBRANE.
2. APPROXIMATELY 1/8" (3 mm) DIAMETER BEAD OF CUT-EDGE SEALANT IS REQUIRED ON CUT EDGES OF FLEX TPO PLUS MEMBRANE.
3. REFER TO MANUFACTURER'S APPROVALS FOR MEMBRANE FASTENING CRITERIA FOR PROPER FASTENERS AND PLATES.