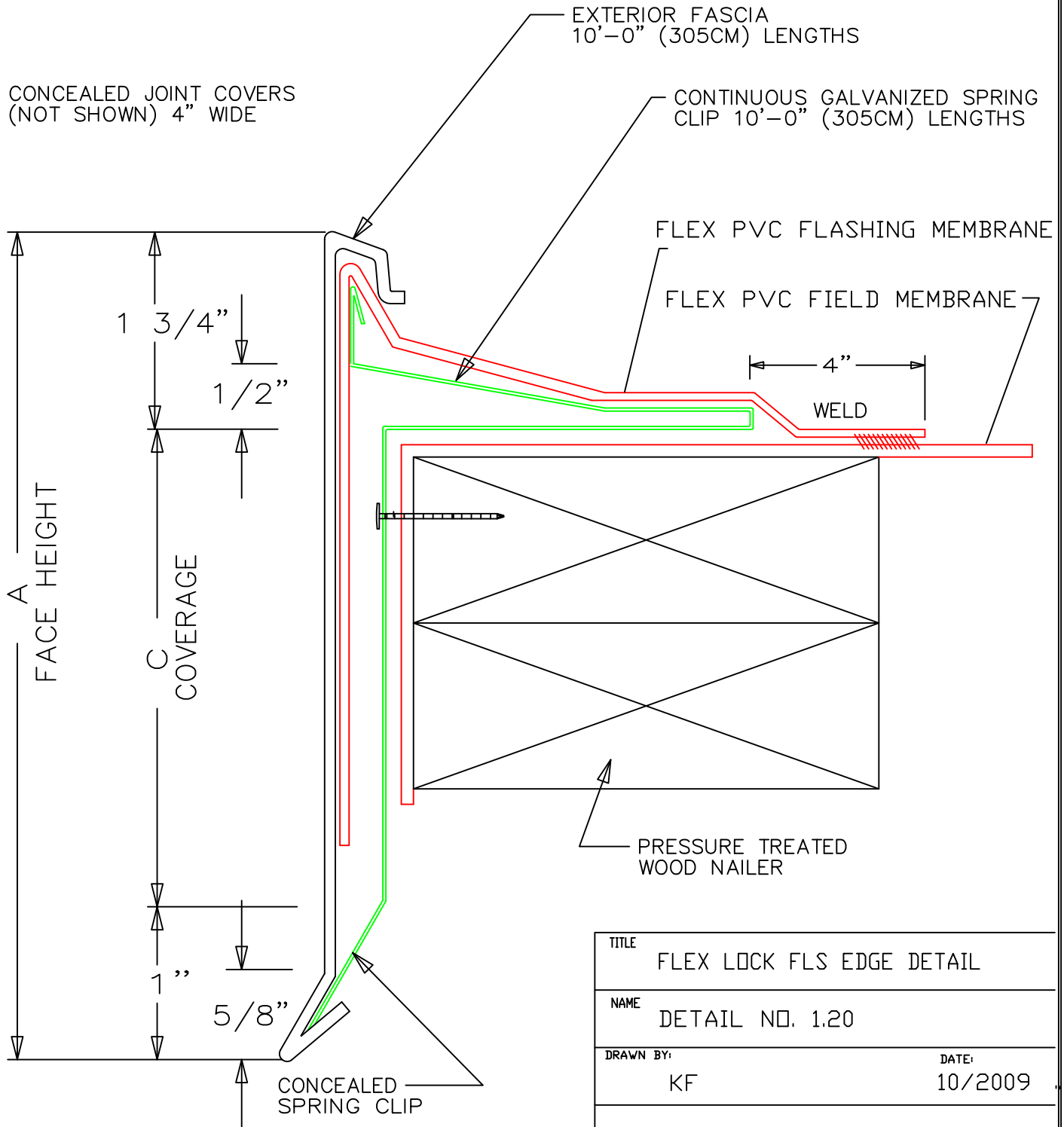


INSTALLATION

- 1 - INSTALL SPRING CLIP OVER PVC FIELD MEMBRANE
- 2 - LAY ROOFING MEMBRANE OVER CLIP AND HOT AIR WELD TO FLEX PVC FIELD MEMBRANE
- 3 - SNAP ON EXTERIOR METAL FASCIA



TITLE	
FLEX LOCK FLS EDGE DETAIL	
NAME	
DETAIL NO. 1.20	
DRAWN BY:	DATE:
KF	10/2009
APPLICABLE TO ALL FLEX PVC	
MECHANICALLY FASTENED SYSTEMS	
FLEX MEMBRANE INTERNATIONAL	2670 LEISCZ'S BRDIGE RD. LEESPORT, PA 19533 800-969-0108 FlexRoofingSystems.com