



Thermoplastic Single Ply and Multi-Ply Roofing Systems

2670 Leisz's Bridge Road, Suite 400, Leesport, PA 19533 Phone (610) 916-9500 Fax (610) 916-9501

Flex Retrofit Drain Clamping Ring Model



Flex Clamping Ring Model Drain Features:

- Aluminum & Stainless Steel Construction For Durability
- 18" x 18" Pre-punched Drain Flange for Securement to Substrate
- U.V. Resistant 14" Diameter Aluminum Drain Strainer
- Drain Flange is Coated with PVC for Hot Air Welding
- Available in Sizes to Retrofit Existing 3", 4", 5" & 6" drain leaders

Flex Retrofit Drain Clamping Ring Model

Inspection

- A. The installing Contractor is responsible for measuring the existing drain pipe I.D. to determine the proper size Flex Retrofit Drain to be installed (3", 4", 5" or 6" sizes).

Preparation

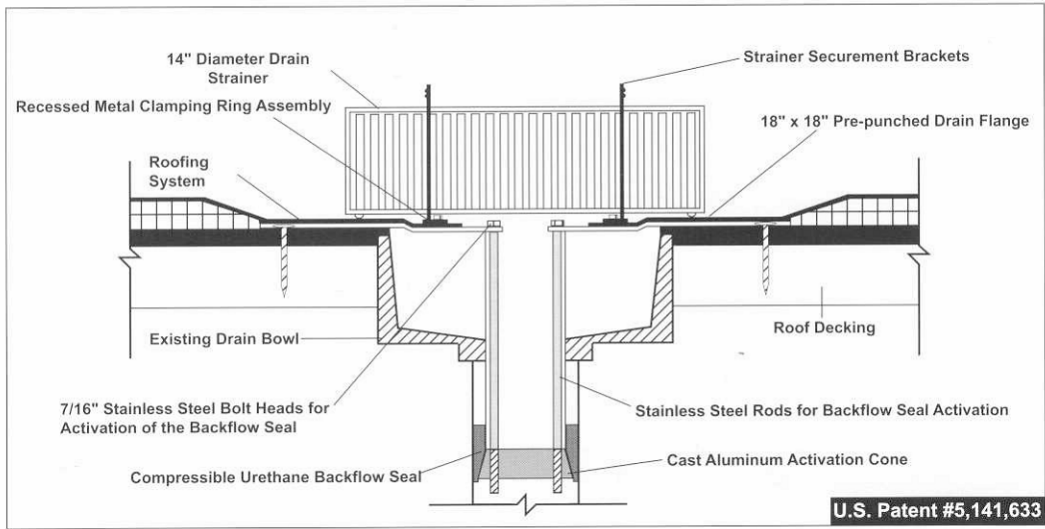
- A. The existing drain pipe shall be cleaned of bitumen build-up, dirt and debris.
- B. Remove clamping ring assembly from the existing drain and discard.

Installation

- A. Install the Flex Membrane field sheet over the existing drain location. Cut a hole in the membrane equal in diameter to the existing drain pipe (directly over the pipe opening).
- B. IMPORTANT – Lower the backflow seal activation cone by pushing down on top of the two backflow rods / nuts. NOTE: The top of the activation cone should remain inside the bottom of the urethane seal.
- C. Place the Flex Retrofit Drain into the prepared leader pipe and secure the drain flange to the substrate by installing proper fasteners through the pre-punched holes, membrane and insulation into the roof substrate.
- D. To activate the backflow seal, hand tighten the two nuts on the backflow rods (using 7/16" nut driver) alternating between the two. Tighten the nuts to the bottom of threading on backflow rods. NOTE: Do not overdrive.
- E. Install one tube of Flex Approved Caulking (per drain) in an 8" diameter and around the base of each six clamping ring studs.
- F. Using the clamping ring as a template, mark the six stud locations for placement over the studs. Install the target sheet of Flex membrane over the drain flange and onto surrounding field sheet a min. of 4". Hot-air weld the target membrane to the field sheet. Ensure that all membrane and flange surface are clean prior to heat-welding.
- G. Install the clamping ring over the target sheet and secure the lock nuts provides with a 7/16" nut driver or wrench. Place the one inch long slots in the top of the strainer over the two strainer securement brackets and snap strainer into position. Installation is then complete.

Warranty

OMG as manufacturer of the Flex Retrofit Drain System, warrants the Flex Retrofit Drain to perform in accordance with the specifications for it intended use if installed in accordance with installation instructions. Such warranty shall be limited solely to the replacement of defective products and neither OMG nor Flex Roofing Systems shall be responsible for any incidental, consequential or any other damages.



Flex Retrofit Drain Sizing Chart

Existing Drain Leader Size

2 – 3/4" to 3"

3 – 3/4" to 4"

4 – 3/4" to 5"

5 – 3/4" to 6"

Flex Retrofit Drain Size Needed

3"

4"

5"

6"

For Technical Support, please call Flex at PH (800) 969-0108 or FAX (610) 916-9501