

SPECIALTY FASTENERS



Thermoplastic Single Ply and Multi-Ply Roofing Systems

800-969-0108 • 610-916-9501 (Fax)
 2670 Leisz's Bridge Road, Suite 400, Leesport, PA 19533
 e-mail: flexroof@cs.com • www.flexroofingsystems.com

PRODUCT DESCRIPTION

The Flex Purlin Fastener is designed for attaching single-ply membrane systems to structural steel purlins (12-18 gauge) in standing seam metal roof retrofit applications.

The Flex Purlin Fastener has a 3/4" drill point which allows the screw to quickly drill through the purlin before the threads engage into the standing seam metal roof. This greatly reduces point burnout and breakage as well as eliminates "jacking" between purlin and standing seam metal.

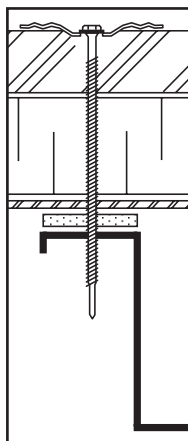
The Flex Purlin Fastener is available in 3 3/4" to 8" lengths.

APPLICATION

The Flex Purlin Fastener must penetrate the purlin a minimum of 1". This ensures a minimum of 1/4" thread penetration into the structural member.

Using a screw gun with a maximum of 1800 RPM, drive the fastener through the purlin until a slight depression is seen around the plate.

Note: Caution should be taken not to overdrive the fastener causing stress plate surface to deflect more than 1/16". Prior to job bid, contact Flex to visit the job site and inspect the deck.



PHYSICAL DATA

The data below is constant for each Flex Purlin Fastener.

Thread Diameter: .210
Shank Diameter: .170
Head Diameter: .435
Head Style: 1/4" Hex Head
Coating: CR-10

Cat. No.	Thread Length	Packaging	Weight
PUR334	FULL	500	13 lb
PUR434	3"	500	16 lb
PUR534	3"	500	20 lb
PUR700	3"	500	24 lb
PUR800	3"	500	27 lb

Each Purlin Fastener has a 3/4" drill point. Therefore, the effective fastening length is 3/4" less than actual length.

PURLIN FASTENER



Fast Facts

The Flex Purlin Fastener is designed for attaching single-ply membrane systems to structural steel purlins in standing seam metal roof retrofit applications.

FEATURES & BENEFITS

- The Flex Purlin Fastener drills through up to 12 gauge steel in seconds.
- The 3/4" drill point allows the fastener to be drilled through the purlin before the threads engage into the the standing seam metal roof.
- Low profile hex head has a smooth surface to ensure that there is no damage to the membrane.

PLATES & ACCESSORIES

Use 2" appropriate stress plate.

For best installation results, use a high torque, low RPM drill. See Accessories section.

SPECIALTY FASTENERS

PURLIN FASTENER

SPECIFICATION

The fastener will be a Flex Purlin Fastener with a nominal shank diameter of .170 and a thread diameter of .210. The Flex Purlin Fastener will be used with a Factory Mutual approved Flex 2" round pressure plate or batten bar. The fastener must be Factory Mutual approved and made in America.

APPLICATION

Using a screw gun with a maximum of 1800 RPM, drive the Flex Purlin Fastener into the purlin until a slight depression is seen around the plate. The Flex Purlin Fastener must penetrate through the purlin a minimum of 1".

Note: Caution should be taken not to overdrive the fastener causing the stress plate to deflect more than 1/16". Prior to job bid, contact Flex to visit the job site and test the fastener.

PHYSICAL DATA

Head Diameter: .435 Shank Diameter: .170 Thread Diameter: .210 Thread: 16 T.P.I.
Head Style: 1/4" Hex Head Packaging: 500/carton

PURLINS FASTENER LENGTH SELECTION PROCEDURE		
Purlin Fastener Length	Combined Thickness of Membrane and/or Existing Substrate	
	Usable Length	Maximum Total Thickness
3¾"	3"	2¾"
4¾"	4"	3¾"
5¾"	5"	4¾"
7"	6¼"	6"
8"	7¼"	7"



Thermoplastic Single Ply and Multi-Ply Roofing Systems

800-969-0108 • 610-916-9501 (Fax)
2670 Leisz's Bridge Road, Suite 400, Leesport, PA 19533
e-mail: flexroof@cs.com • www.flexroofingsystems.com