



Thermoplastic Single Ply and Multi-Ply Roofing Systems

2670 Leisch's Bridge Road, Suite 400, Leesport, PA 19533 Phone (610) 916-9500 Fax (610) 916-9501

Flex Retrofit Drain PVC Coated Flange Model



Flex PVC Coated Flange Model Drain Features:

- Aluminum & Stainless Steel Construction For Durability
- 18" x 18" Pre-punched Drain Flange for Securement to Substrate
- U.V. Resistant 14" Diameter Aluminum Drain Strainer
- Drain Flange is Coated with PVC for Hot Air Welding
- Available in Sizes to Retrofit Existing 3", 4", 5" & 6" drain leaders

Flex Retrofit Drain PVC Coated Flange Model

Inspection

- A. The installing Contractor is responsible for measuring the existing drain pipe I.D. to determine the proper size Flex Retrofit Drain to be installed (3", 4", 5" or 6" sizes).

Preparation

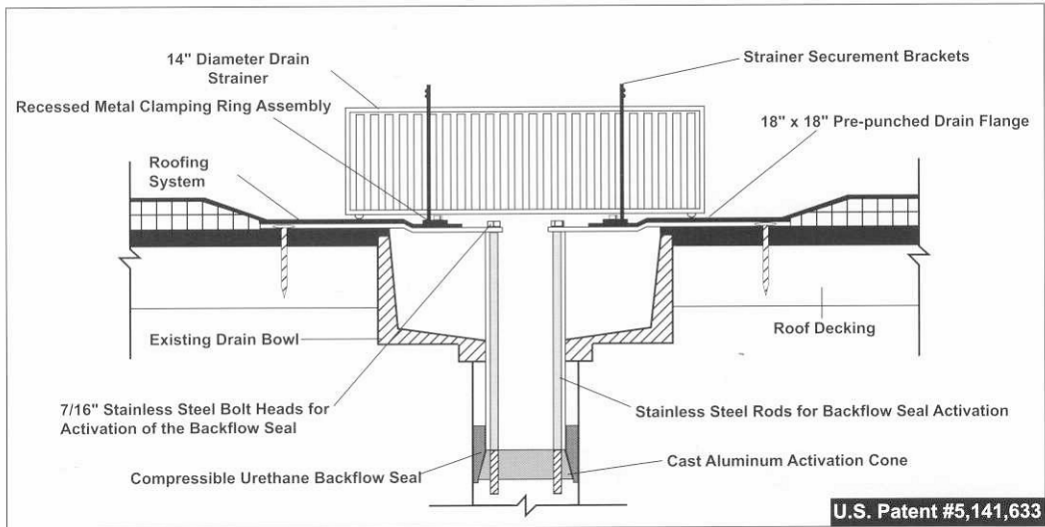
- A. The existing drain pipe shall be cleaned of bitumen build-up, dirt and debris.
- B. Remove clamping ring assembly from the existing drain and discard.

Installation

- A. Install the Flex Membrane field sheet over the existing drain location. Place a hole (same diameter as existing leader pipe) in the membrane. The hole should be centered over existing pipe opening and accommodate the O.D. of Flex drain pipe to be installed.
- B. IMPORTANT – Lower the backflow seal activation cone by pushing down on top of the two backflow rods / nuts. NOTE: The top of the activation cone should remain inside the bottom of the urethane seal (do not fully disengage from urethane).
- C. Place the Flex Retrofit Drain into the prepared leader pipe and secure the drain flange to the substrate by installing proper fasteners through the 8 pre-punched holes in the perimeter of the drain flange.
- D. To activate the backflow seal, hand tighten the two nuts on the backflow rods (using 7/16" nut driver) alternating between the two. Tighten the nuts to the bottom of threading on backflow rods. NOTE: Do not overdrive.
- E. Hot air weld Flex 60 Mil or Flashing Membrane to the coated drain flange and onto the surrounding field sheet. Flashing Membrane should extend onto field sheet a min of 4". Membrane and drain flange surfaces should be cleaned prior to hot air welding.
- F. Place the drain strainer over the two strainer securement brackets, lining the brackets up with the two - 2" long slots in the top of the strainer.
- G. Install the stainless steel bolts and washers into the securement brackets with a 7/16" wrench. Tighten nuts snugly into position. Flex Drain Installation is then complete.

Warranty

OMG as manufacturer of the Flex Retrofit Drain System, warrants the Flex Retrofit Drain to perform in accordance with the specifications for its intended use if installed in accordance with installation instructions. Such warranty shall be limited solely to the replacement of defective products and neither OMG nor Flex Roofing Systems shall be responsible for any incidental, consequential or any other damages.



Flex Retrofit Drain Sizing Chart

| Existing Drain Leader Size | Flex Retrofit Drain Size Needed |
|----------------------------|---------------------------------|
| 2 – ¾" to 3" | 3" |
| 3 – ¾" to 4" | 4" |
| 4 – ¾" to 5" | 5" |
| 5 – ¾" to 6" | 6" |

For Technical Support, please call Flex at PH (800) 969-0108 or FAX (610) 916-9501